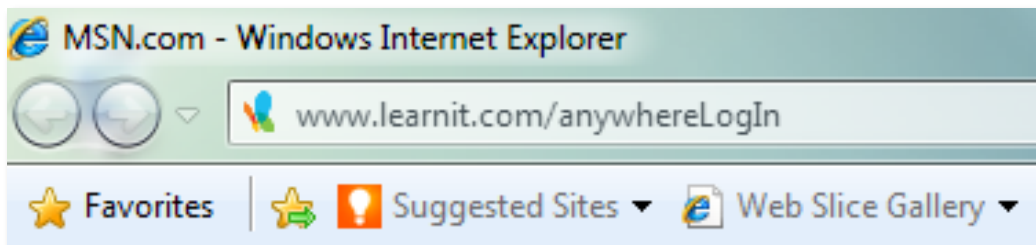


Learn iT

Dual Monitors for LearnIT! Anywhere

1. Open **TWO** web browser windows (e.g. Internet Explorer) and drag one of them to your second monitor.

2. In one of the web browsers, type this in the address bar:
www.learnit.com/anywhereLogIn.



3. On the following page, **enter your email address**, and click **OK**.

Welcome to the Learn iT! [Anywhere](#) Class Connection Page.

Email Address:

Trouble? Call Learn iT Anywhere support at 415.946.6500.

IMPORTANT: If you're logging on to Learn iT! Anywhere with two monitors or two computers at the same time, you **MUST** follow these directions:
[Dual Monitors](#) | [Two Computers](#)

OTHERS: Log in with your email above!

[RESOURCES](#)
[OVERVIEW](#)
[TEST YOUR SYSTEM](#)
[SUPPORT](#)

4. On the following page, click the link that is named after the class you are about to attend (e.g. HTML):

The screenshot shows the Learn IT! website interface. At the top left is the "Learn IT!" logo. To its right is the "Microsoft GOLD CERTIFIED Partner" logo. Further right, it says "Learning Solutions Information Worker Solutions". On the top right, there are links for "Login | Get Info", "Welcome Register", and the phone number "415.693.0250". A blue navigation bar contains the following menu items: HOME, SERVICES, COURSES, WHAT'S NEW, CLIENTS / PARTNERS, ABOUT US, REGISTRATION, and ARTICLES. Below this is another blue bar with "OVERVIEW", "TEST YOUR SYSTEM", and "SUPPORT". The main content area features the "Learn IT! ANYWHERE" logo followed by "step 1 of 4" in red. A blue box contains the text "click below to connect to:" followed by a large blue link "HTML". Below the link, it displays "user name: classroom\08-06" and "password: zaq123". At the bottom of this box, there is a link "click here to test your system". Below the box, there is a support message: "Trouble? Call Learn IT Anywhere support at 415.946.6500. Error? Computer cannot be found? click here to test your system". The footer contains several partner logos: Microsoft GOLD CERTIFIED Partner, Microsoft Software Assurance for Volume Licensing, citrix access PARTNER AUTHORIZED Learning Center, Project Management R.E.P. Institute, Microsoft Office Specialist, and Adobe AUTHORIZED Training Center.

Learn IT! step 1 of 4
ANYWHERE

click below to connect to:

[HTML](#)

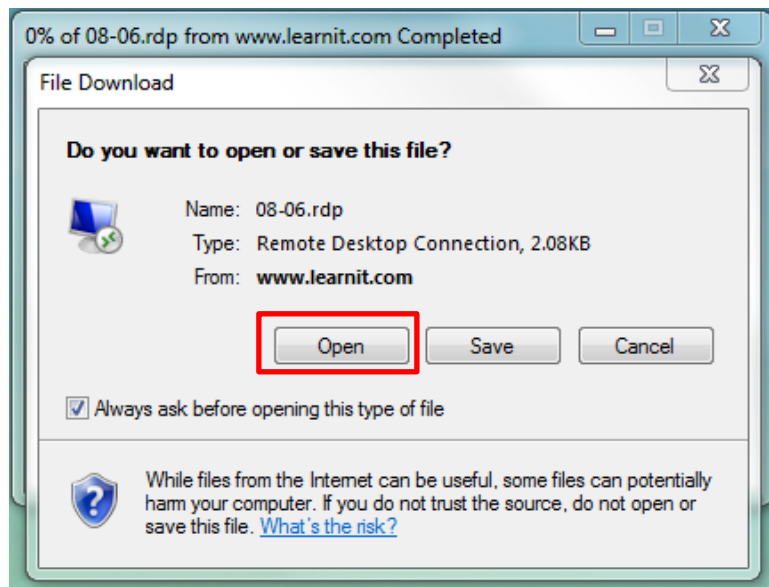
user name: classroom\08-06
password: zaq123

[click here to test your system](#)

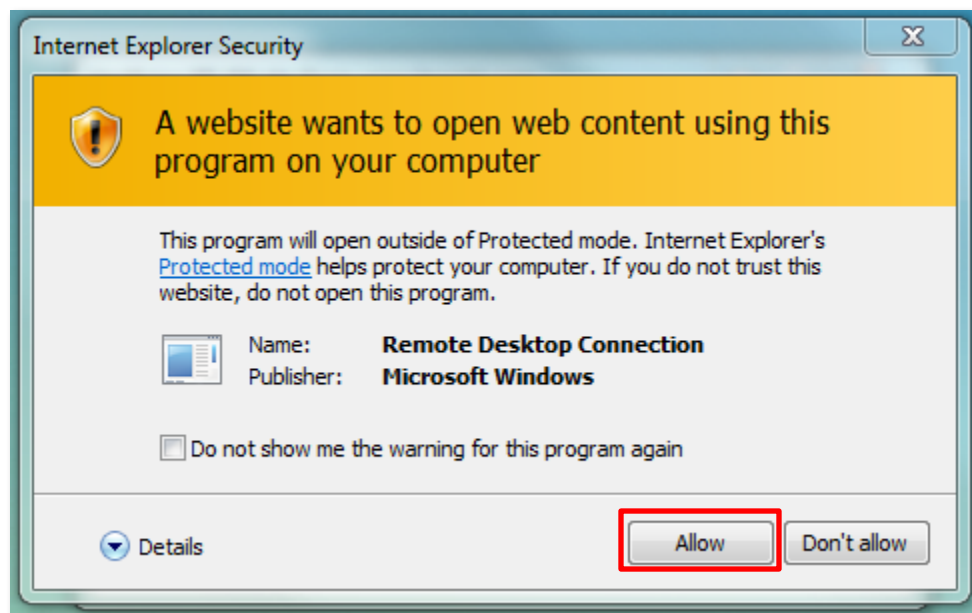
Trouble? Call Learn IT Anywhere support at 415.946.6500.
Error? Computer cannot be found?
[click here to test your system](#)

Microsoft GOLD CERTIFIED Partner
Microsoft Software Assurance for Volume Licensing
citrix access PARTNER AUTHORIZED Learning Center
Project Management R.E.P. Institute
Microsoft Office Specialist
Adobe AUTHORIZED Training Center

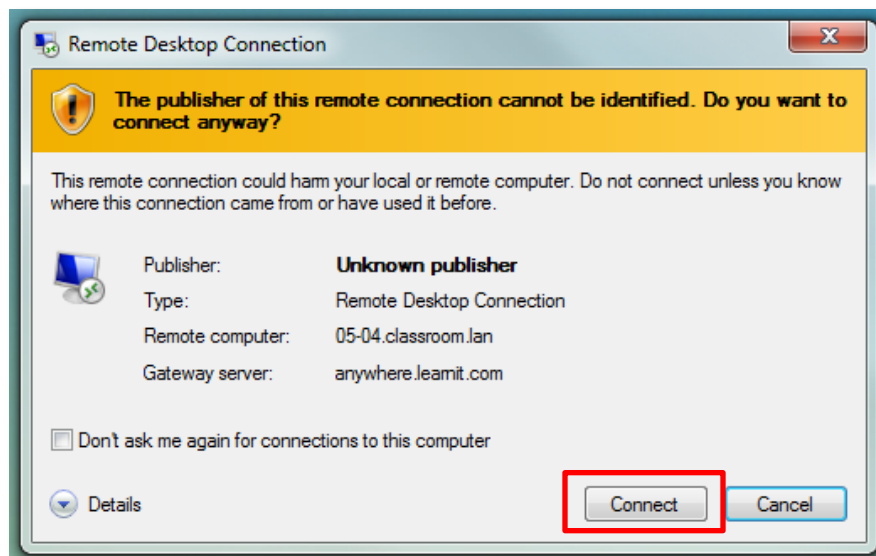
5. In the dialog box that appears, click **Open**:



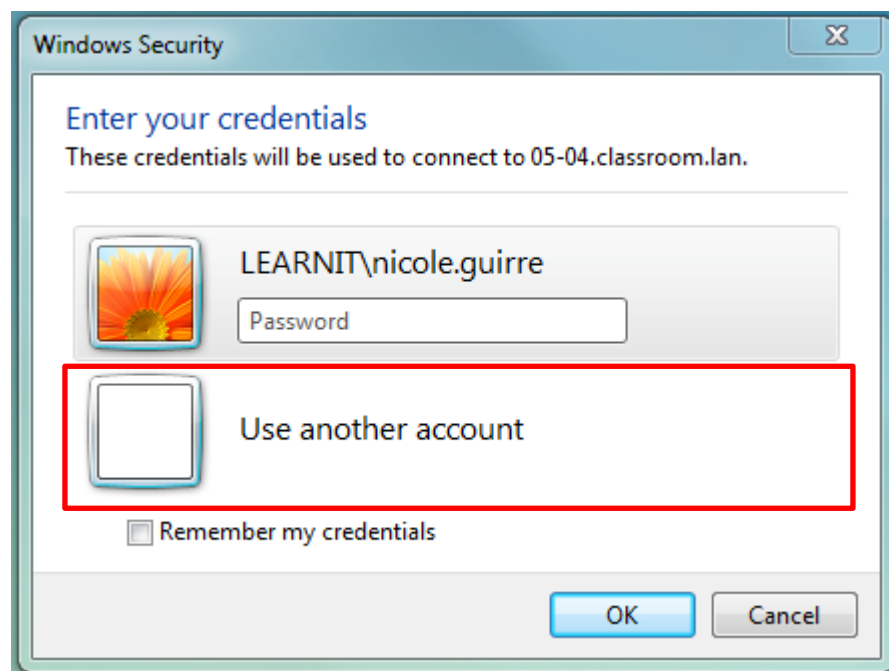
6. Another dialog box will appear. Click **Allow**:



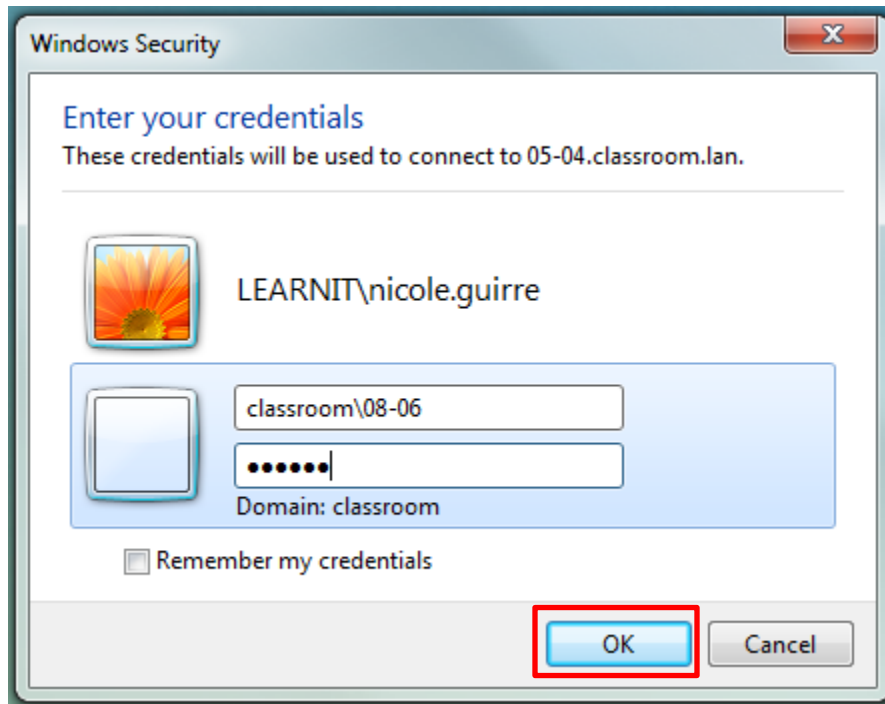
7. Again, a dialog box will appear. Click **Connect**:



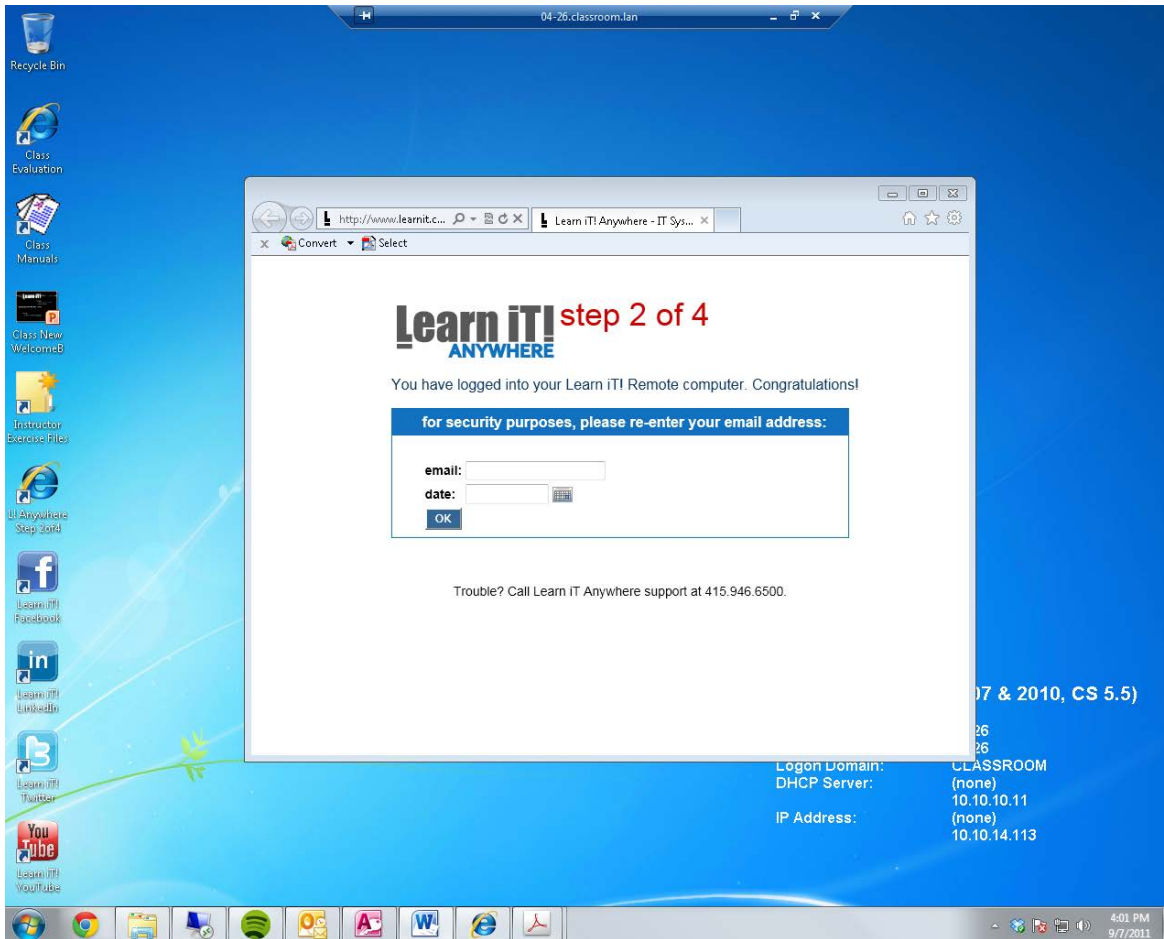
8. You will be prompted to enter your credentials. Click **Use another account**:



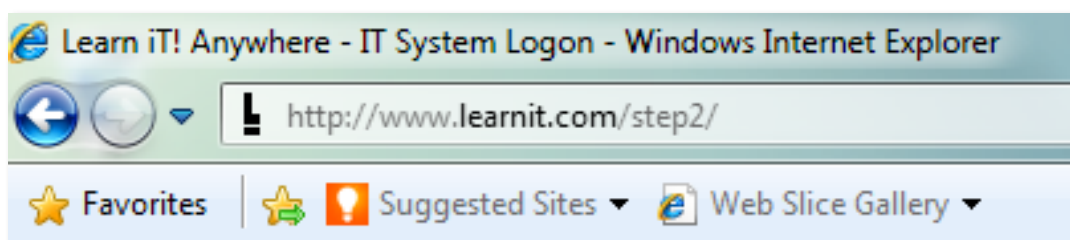
9. Enter the credentials provided in Step 4 of this procedure, and click OK:



10. You will then see the screen of the remote computer that you just logged in to but **DO NOT ENTER** your email address:



11. Using the other web browser on the second monitor, type this in the address bar: <http://www.learnit.com/step2/>




12. Enter your email address, select the current date, and click OK:

Learn iT! step 2 of 4 **ANYWHERE**

You have logged into your Learn iT! Remote computer. Congratulations!

for security purposes, please re-enter your email address:

email:	<input type="text" value="yourname@example.com"/>
date:	<input type="text" value="9/7/2011"/> 
<input type="button" value="OK"/>	

Trouble? Call Learn iT Anywhere support at 415.946.6500.

13. On the next page, you will see the phone number to join the conference call with your instructor and other classmates. Below, click the link that says **Click here to view presentation** to see your instructor's screen:

Learn iT! step 3 of 4 **ANYWHERE**

dial in to the audio portion of your class:

Toll Free: 1 (800) 747-5150
International: 1 (303) 248-1290
Access Code: 6930250

Learn iT! step 4 of 4 **ANYWHERE**

click the link below to view your instructor's presentation:

[Click here to view presentation](#)

Trouble? Call Learn iT Anywhere support at 415.946.6500.

**Congratulations! You have now improved your *LearnIT!*
Anywhere experience by using two monitors to perform your
hands on labs while watching the instructor presentation at
the same time. We hope you enjoy your class!**

Technical Issues? Email or call our support team at:

helpdesk@learnit.com

or

Ph. 415-946-6500